

wM-Bus Outdoor temperature sensor JUNCO



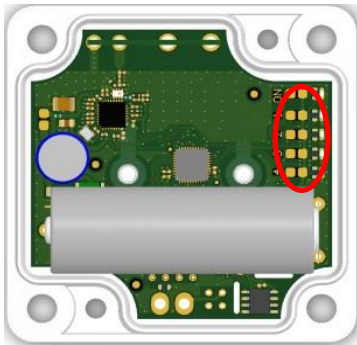
Product description

The outdoor sensor JUNCO is equipped with the same technical functions as the indoor temperature sensor MYNA, but is also characterized by a higher temperature range and can easily be used with temperatures from -40°C to $+65^{\circ}\text{C}$. The application of the IP66 casing in connection with an efficient lithium battery provides the outdoor use in the extended temperature range. Furthermore the casing protects against humidity and dust and is UV-stabilized.

The used radio technology simplifies the installation and saves the necessity of complex cable systems.



Parameters



The highlighted parameters can be changed as follows:

- The usage of the encryption process
- The operating mode according to EN 13757-4
- The transmission interval

Pad mode

Encryption	1	
Enable	ON	
Disable	OFF	
wM-Bus	2	
Mode		
S-Mode	ON	
T-Mode	OFF	
TX Interval	3	4
1 min	ON	ON
5 min	OFF	ON
10 min	ON	OFF
15 min	OFF	OFF

Configuration options

- Encryption (OMS Encryption Mode 5 or 0)
- wM-Bus Mode S or T (optional Mode C)
- Transmission Interval 1, 5, 10 or 15 minutes

Features:

- Temperature range: -40°C to $+65^{\circ}\text{C}$
- Measuring accuracy:
 - C: $\pm 0,5^{\circ}$: from -20°C to $+65^{\circ}\text{C}$
 - C: $\pm 0,5^{\circ}$: from -40°C to -20°C
- Hardwired lithium battery
- Useful battery life up to 12 years
- On- and Off-Option through appropriate pads
- Configuration possible at the factory or on site
- Protection class IP66